

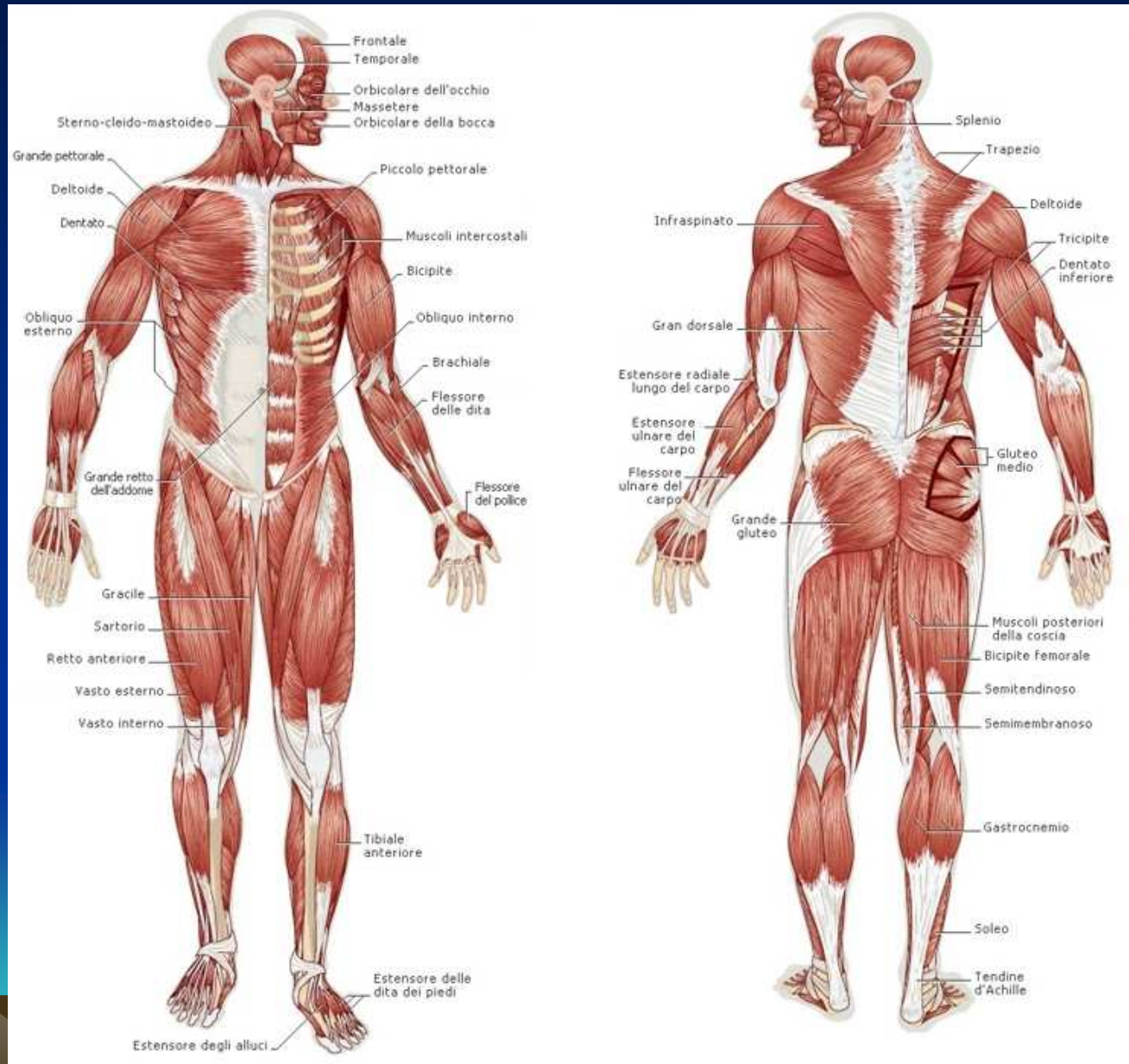
# ANATOMIA E FISIO-PATOLOGIA

**MASSIMOFRANZIN**

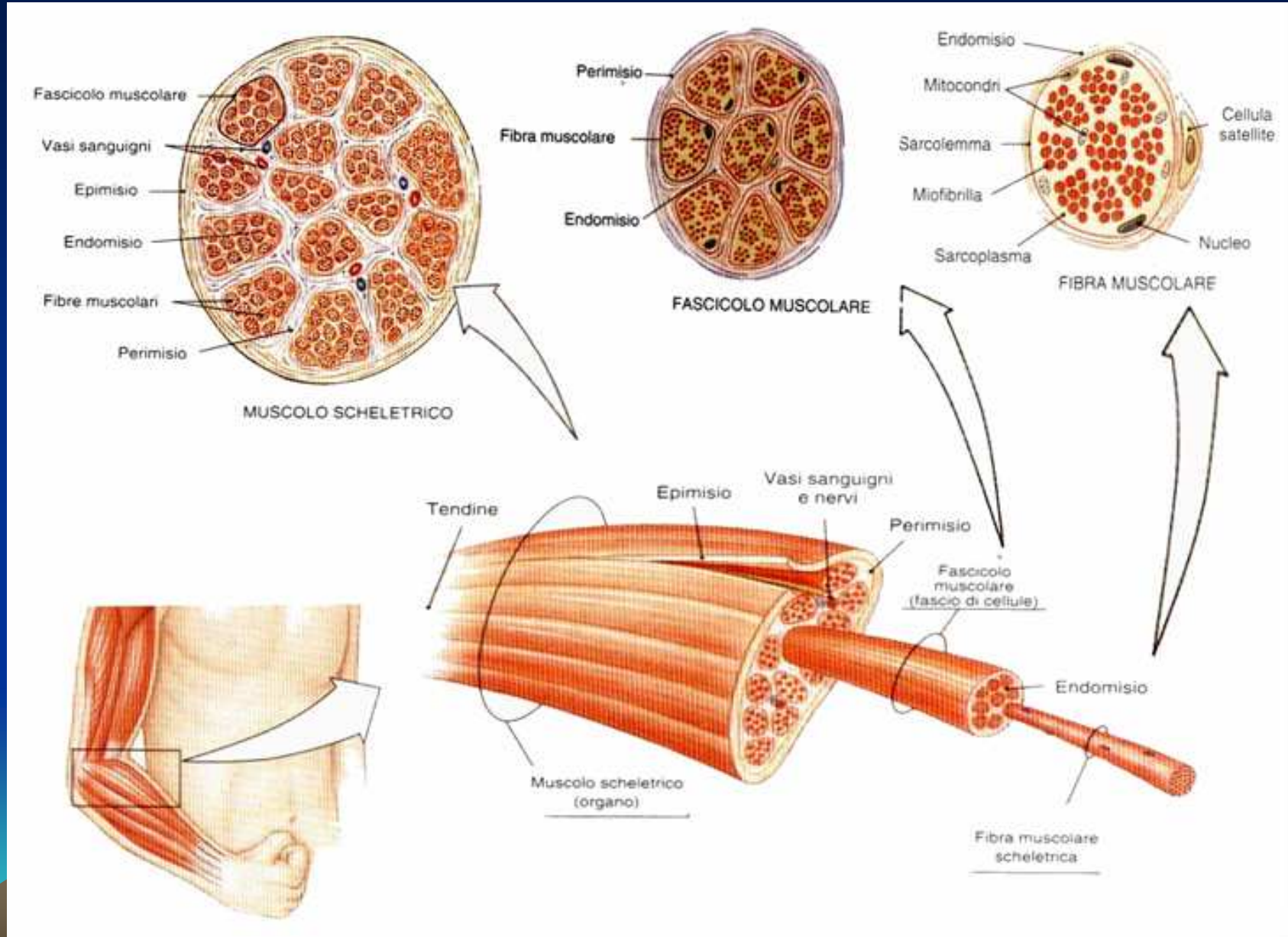
*Original Web Site*

## IL SISTEMA MUSCOLARE

# SISTEMA MUSCOLARE



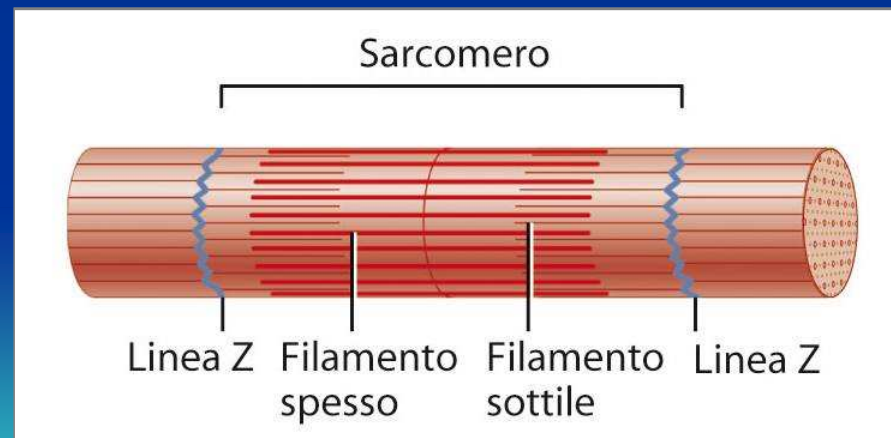
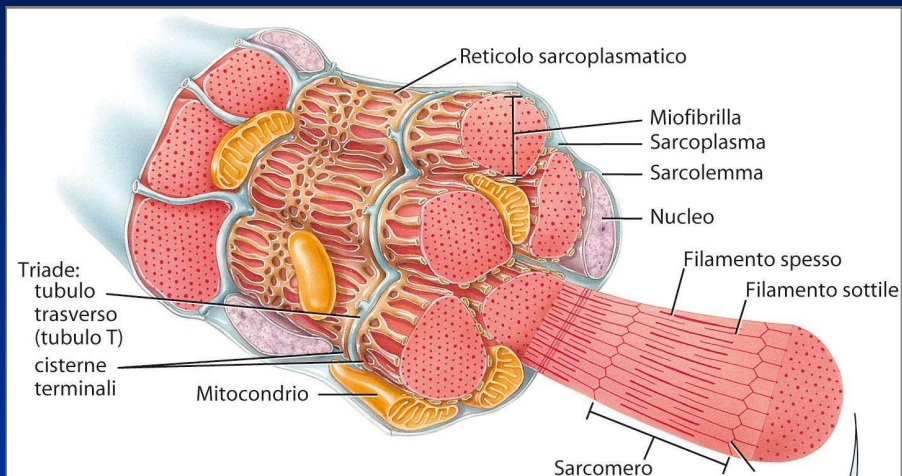
# TESSUTO MUSCOLARE



# TIPI DI TESSUTO MUSCOLARE

- **SCHELETRICO:** È ATTACCATO ALLE OSSA E MUOVE PARTI DELLO SCHELETRO;
- **CARDIACO:** SI TROVA UNICAMENTE NEL CUORE;
- **LISCIO:** SI TROVA NELLE PARETI DEI VASI SANGUIGNI E IN QUELLA DEGLI ORGANI CAVI.

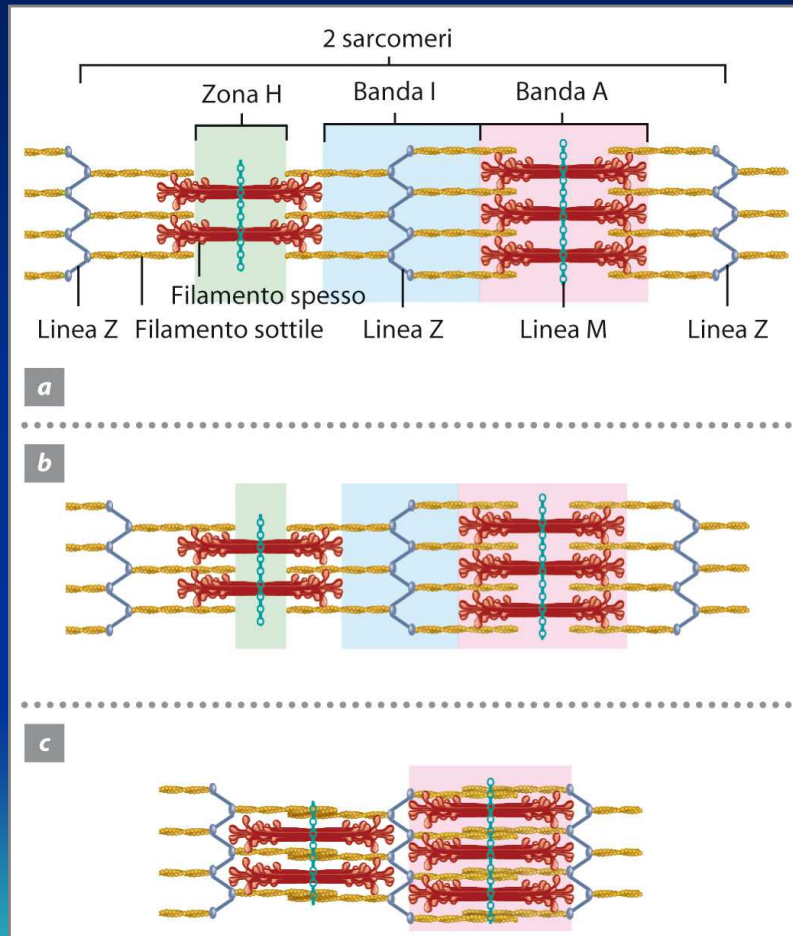
# TIPI DI TESSUTO MUSCOLARE SCHELETRICO



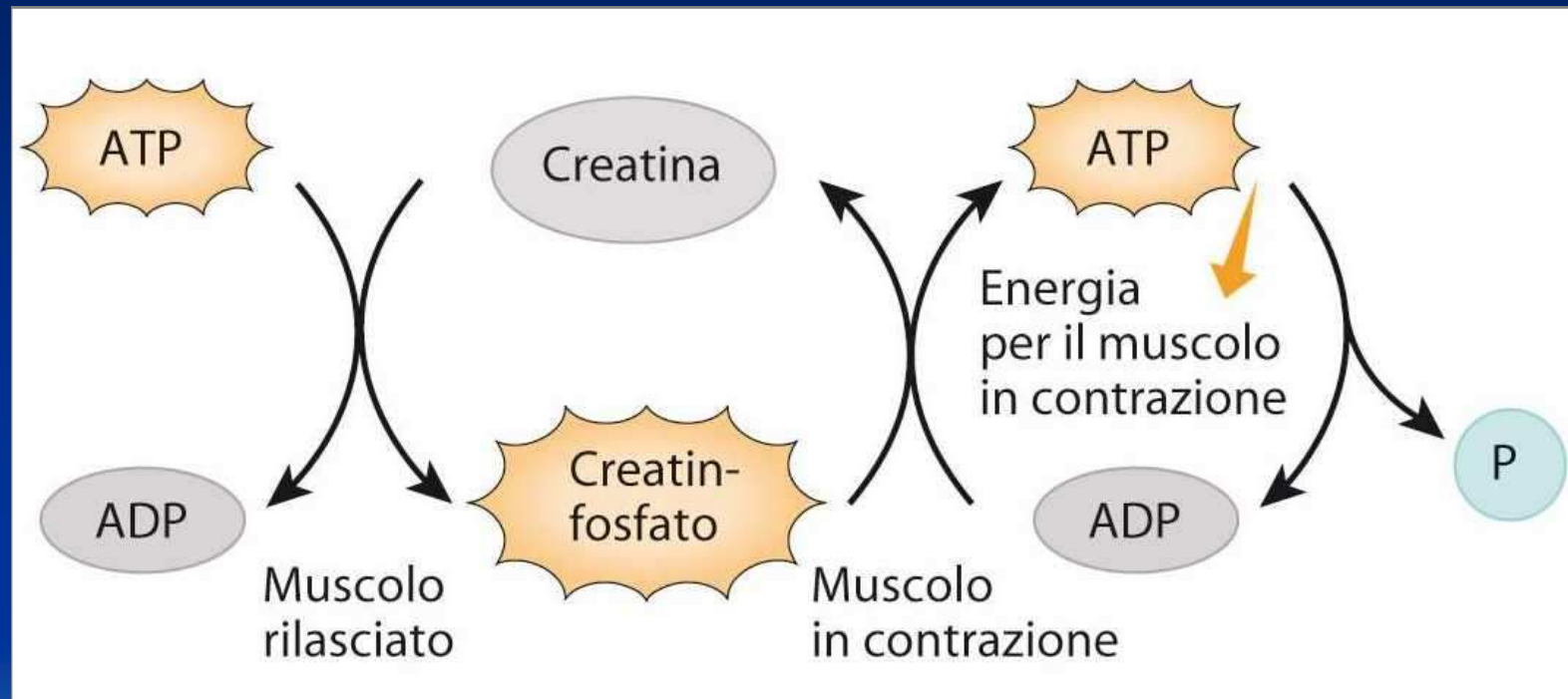
## **LA CONTRAZIONE MUSCOLARE**

**DURANTE LA CONTRAZIONE MUSCOLARE LE TESTE MIOSINICHE DEI FILAMENTI SPESSI ESERCITANO UNA TRAZIONE SUI FILAMENTI SOTTILI, FACENDOLI SCORRERE VERSO IL CENTRO DEL SARCOMERO, CHE QUINDI SI ACCORCIA.**

# LA CONTRAZIONE MUSCOLARE

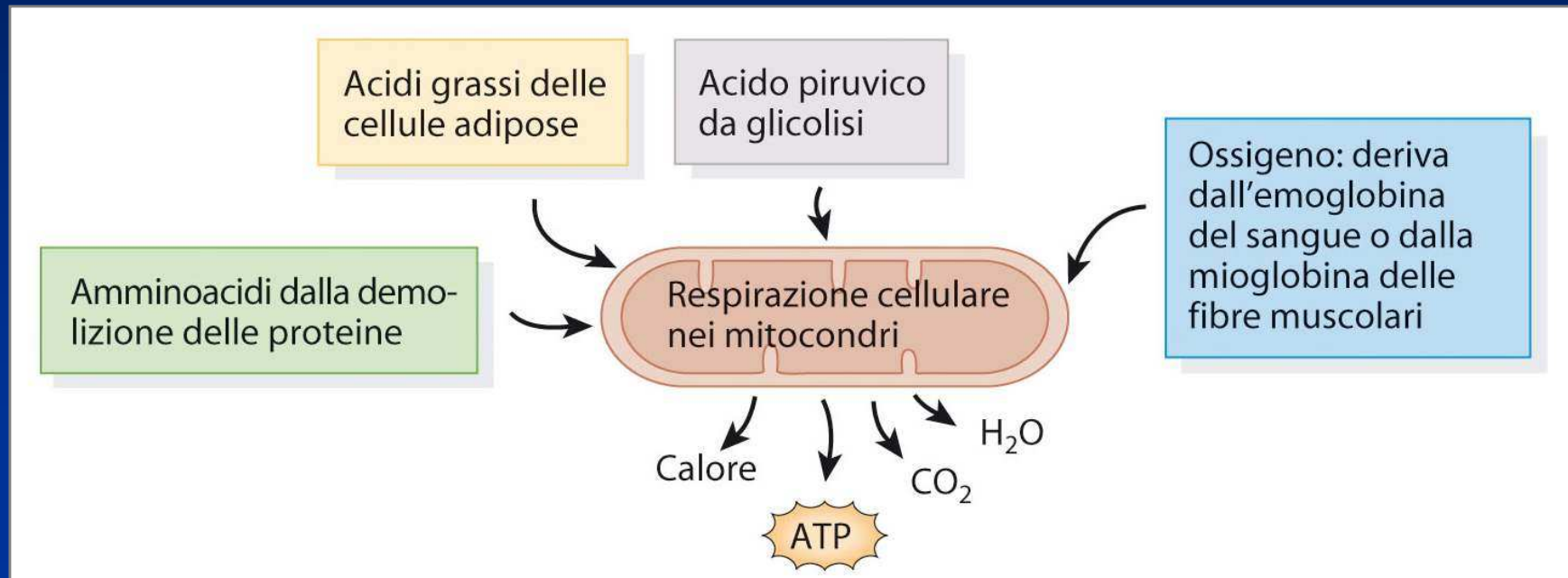


# ATTIVITA' MUSCOLARE

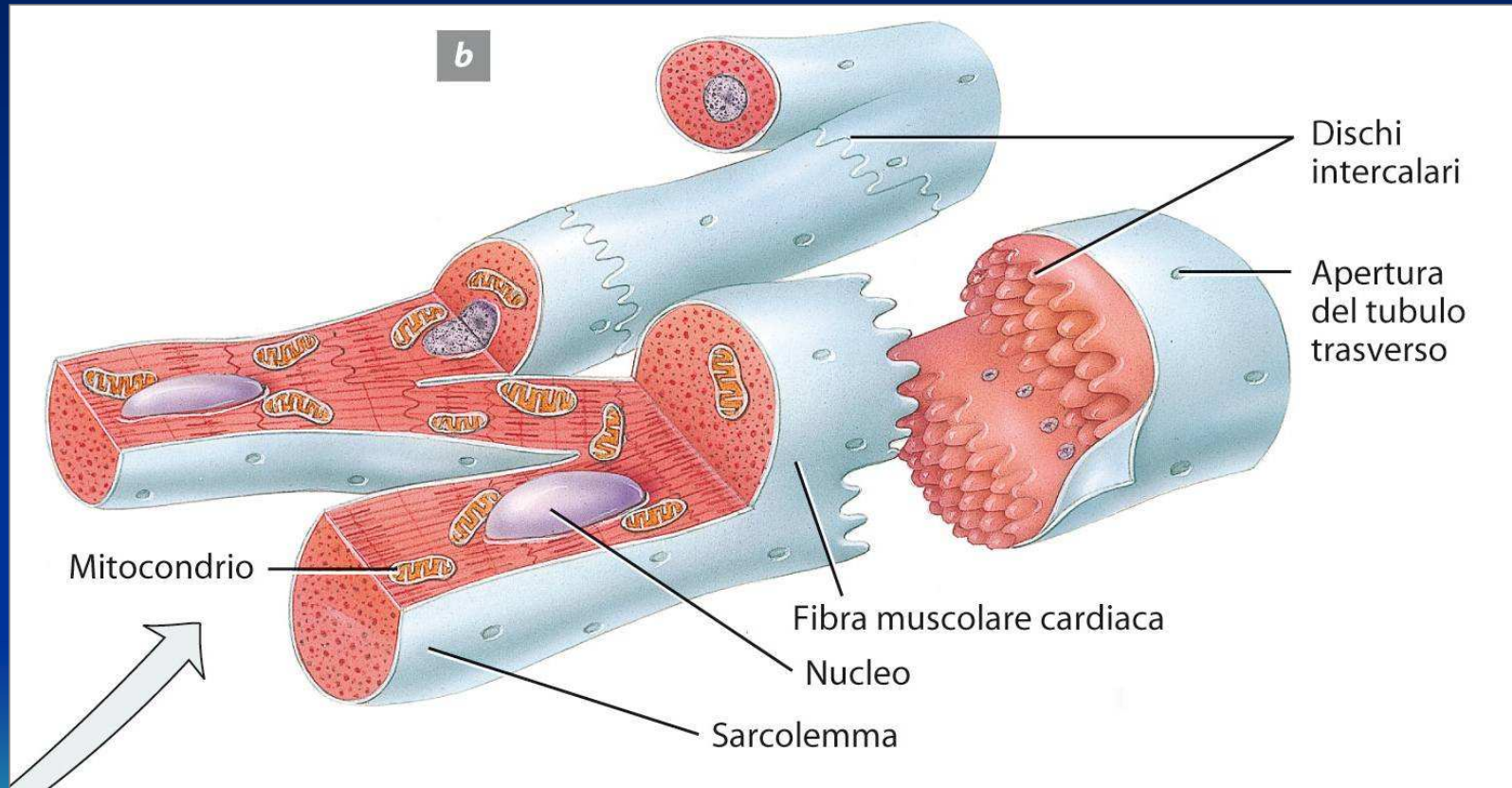




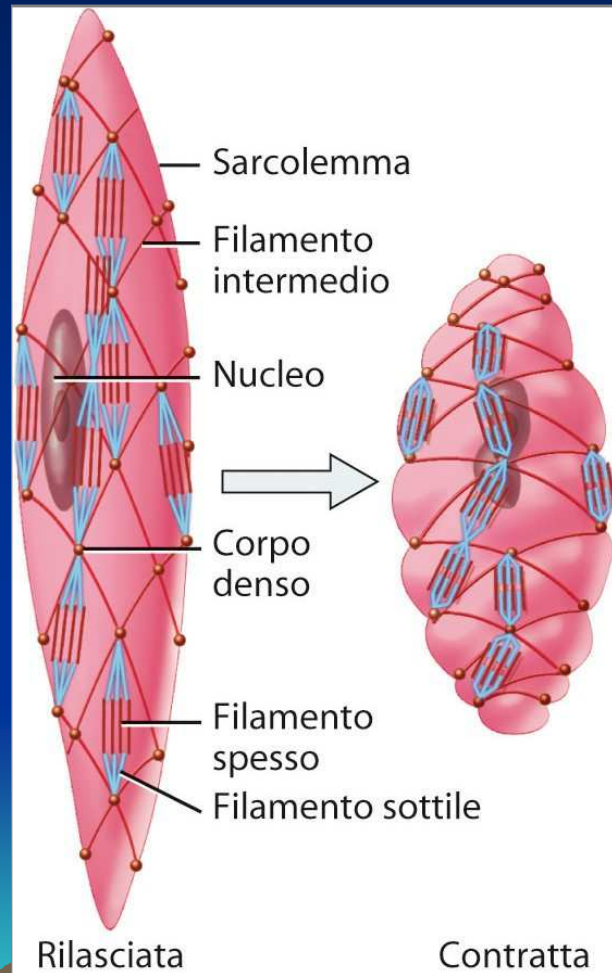
# ATTIVITA' MUSCOLARE



# TESSUTO MUSCOLARE CARDIACO



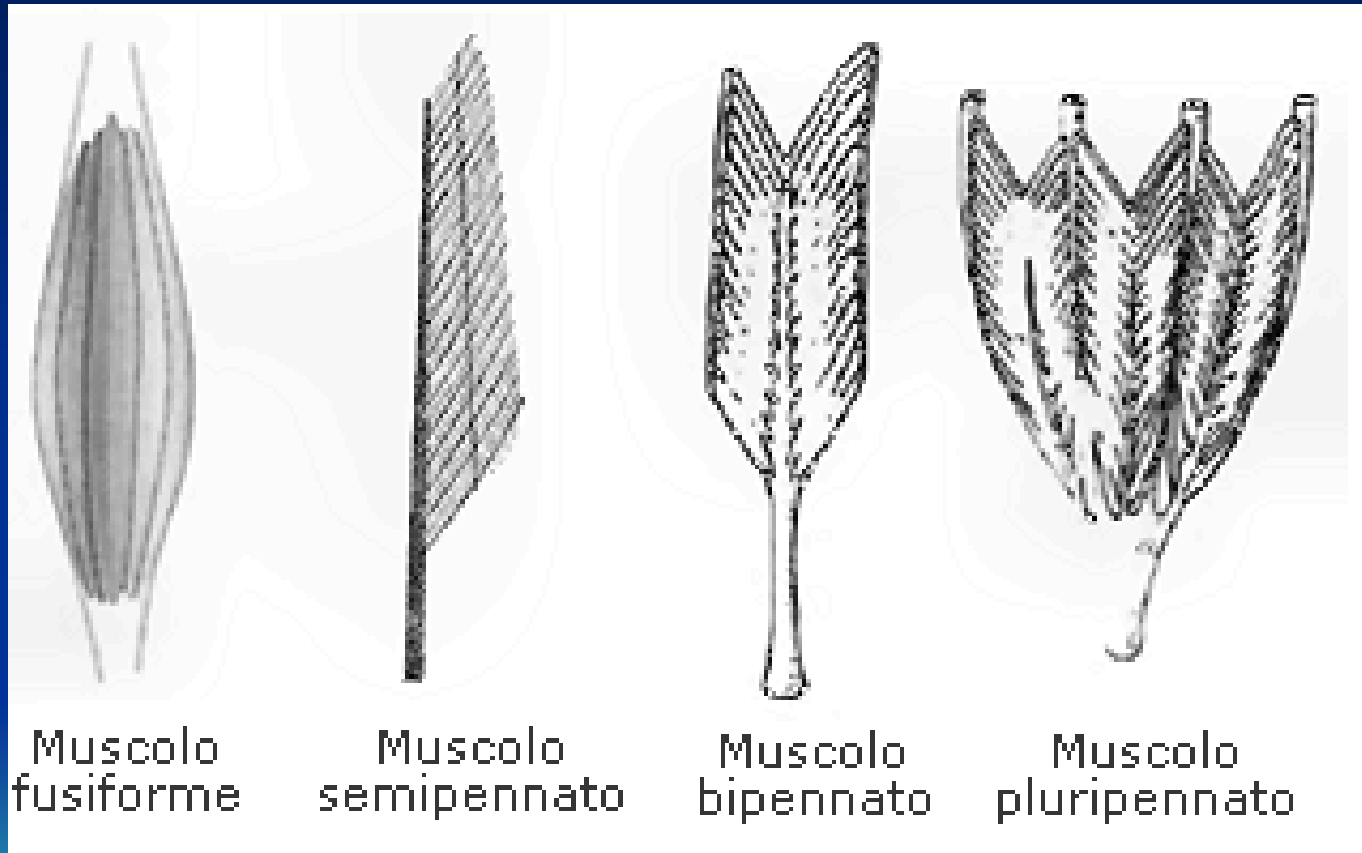
# TESSUTO MUSCOLARE LISCIO



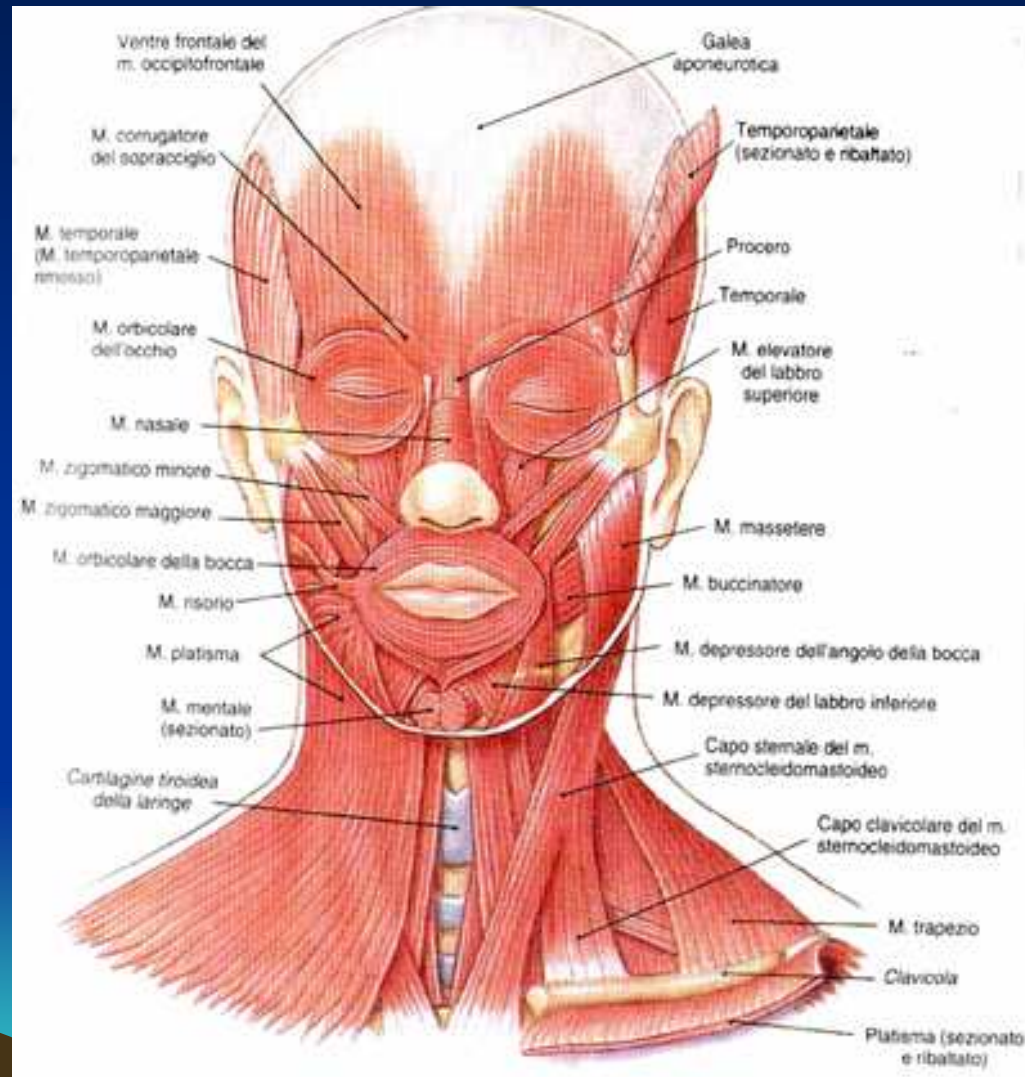
- IL TESSUTO MUSCOLARE LISCIO SI TROVA IN MOLTI **ORGANI INTERNI** E RIVESTE I **VASI SANGUIGNI**.

- IL MUSCOLO LISCIO È UN **MUSCOLO INVOLONTARIO**.

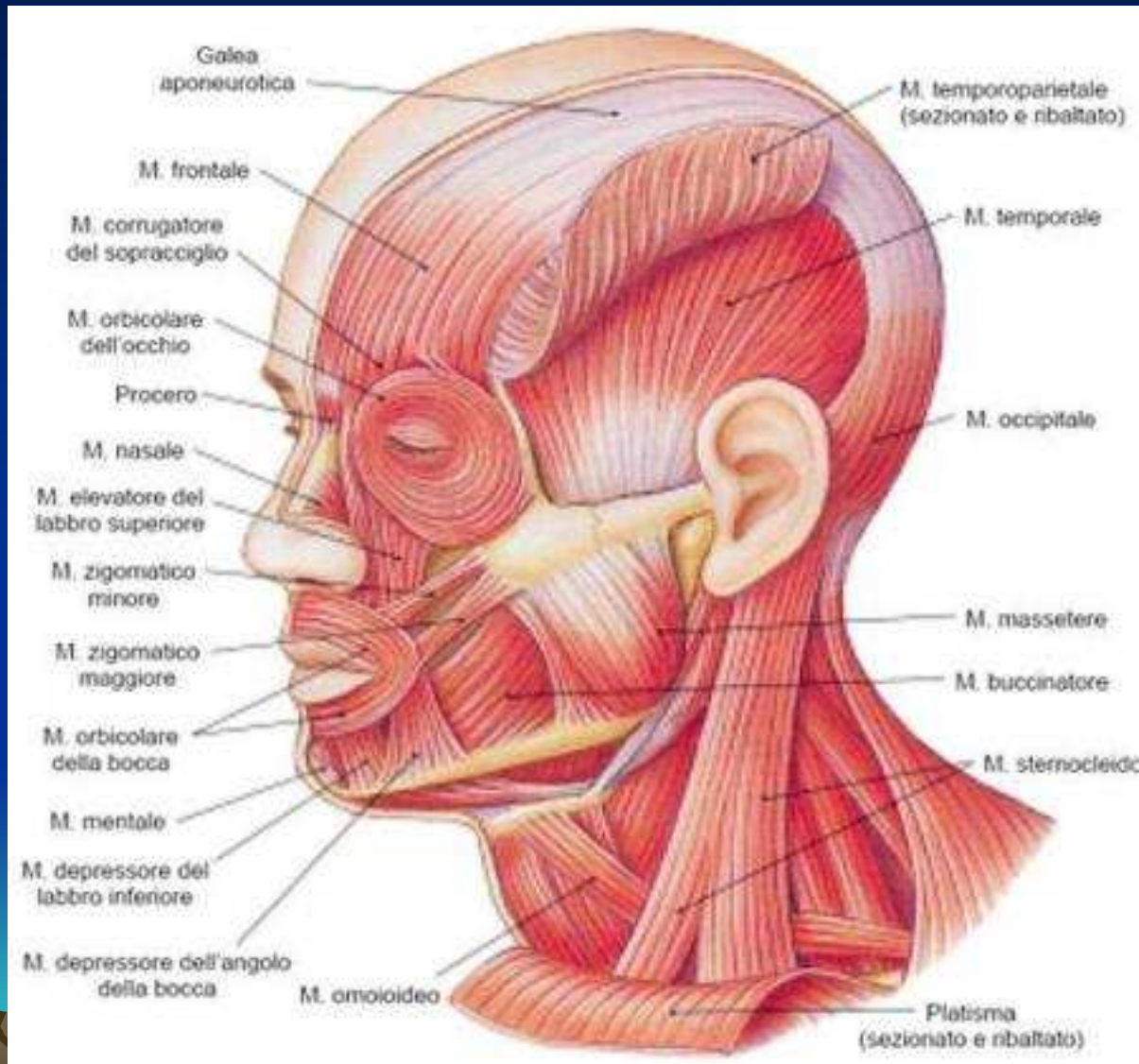
# I MUSCOLI



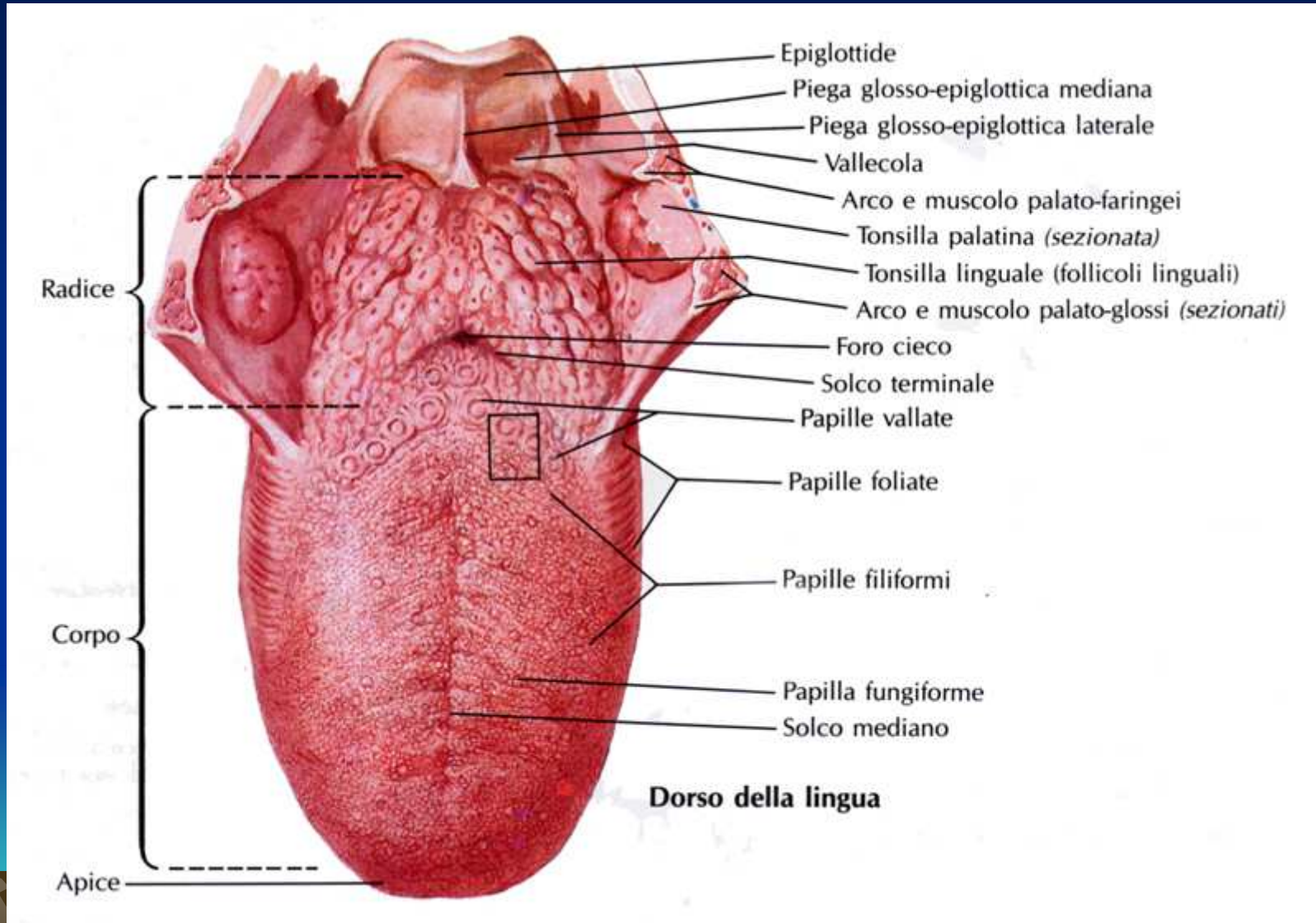
# I MUSCOLI DELLA FACCIA



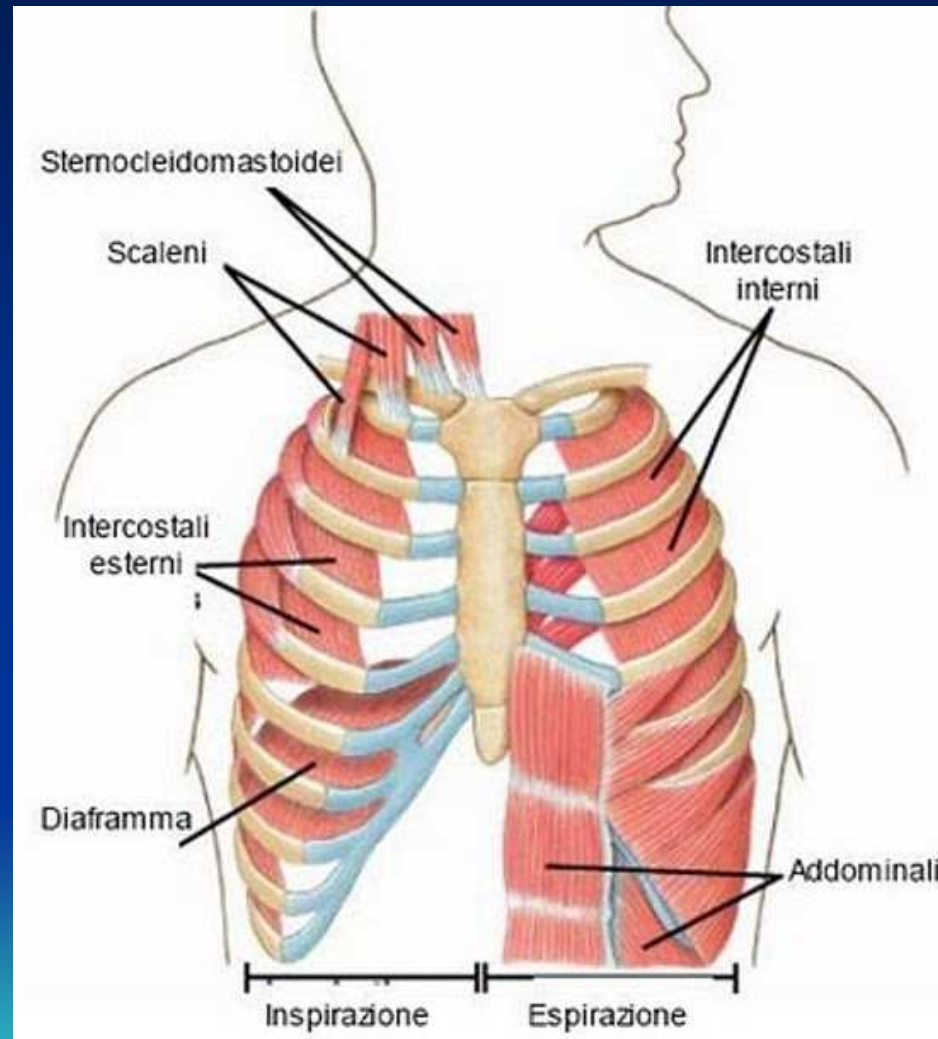
# I MUSCOLI



# I MUSCOLI DELLA BOCCA

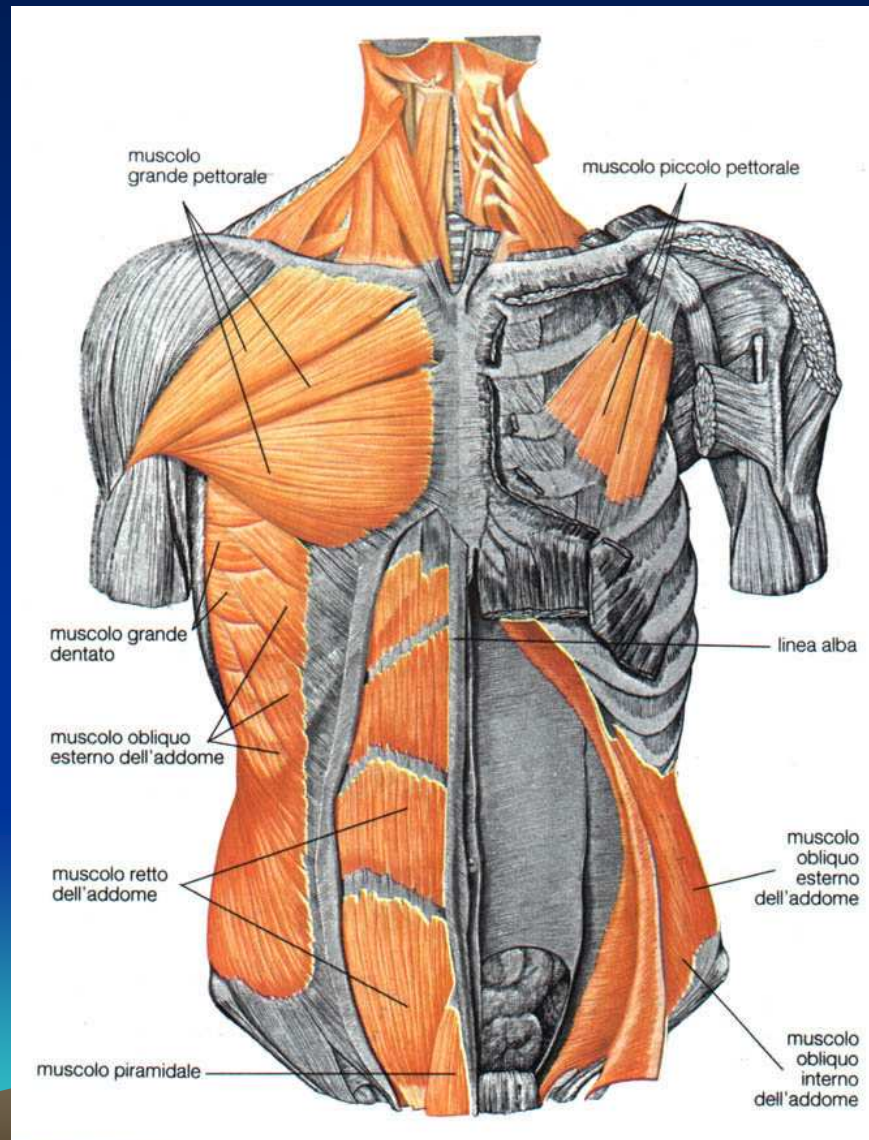


# I MUSCOLI DEL TORACE



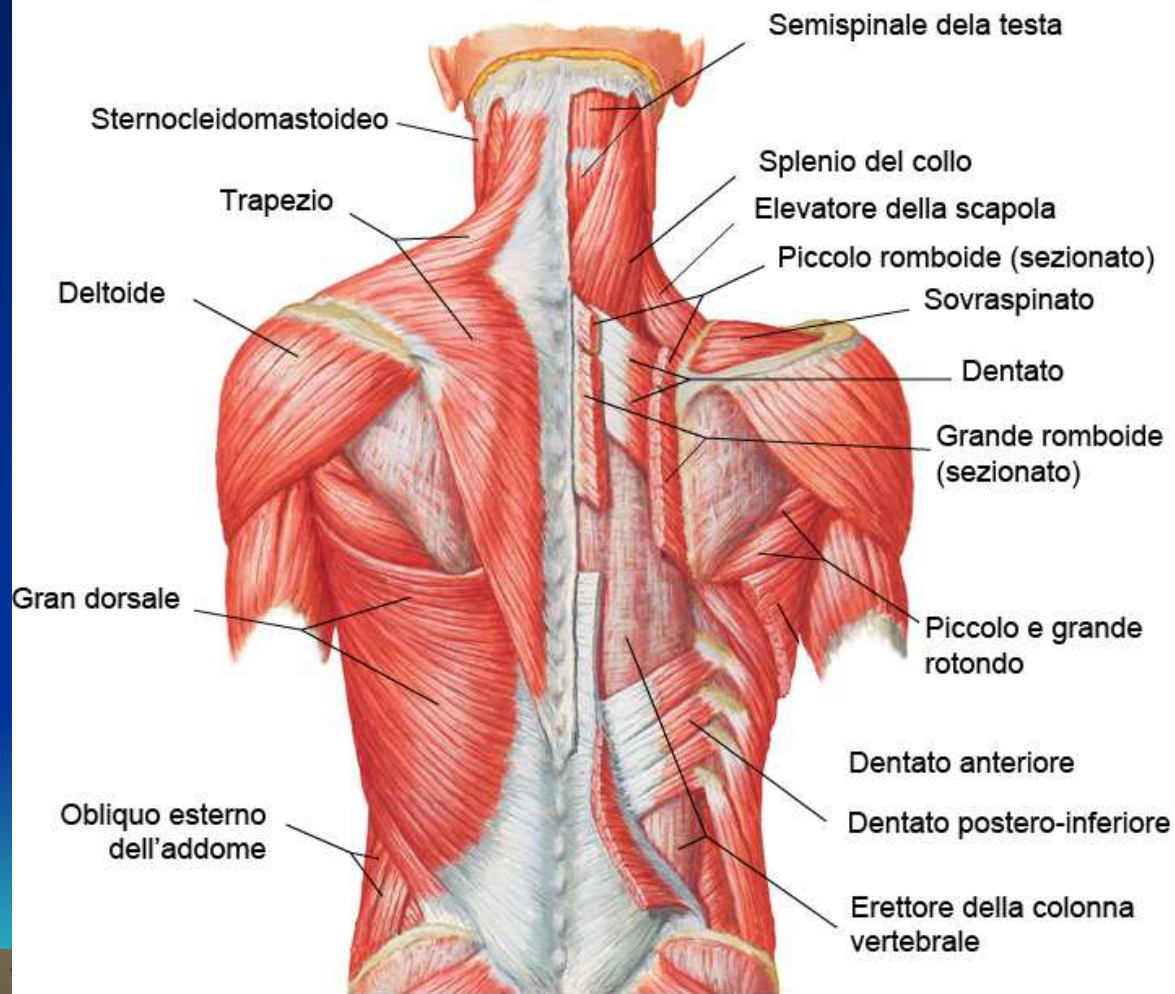


# I MUSCOLI DEL TORACE

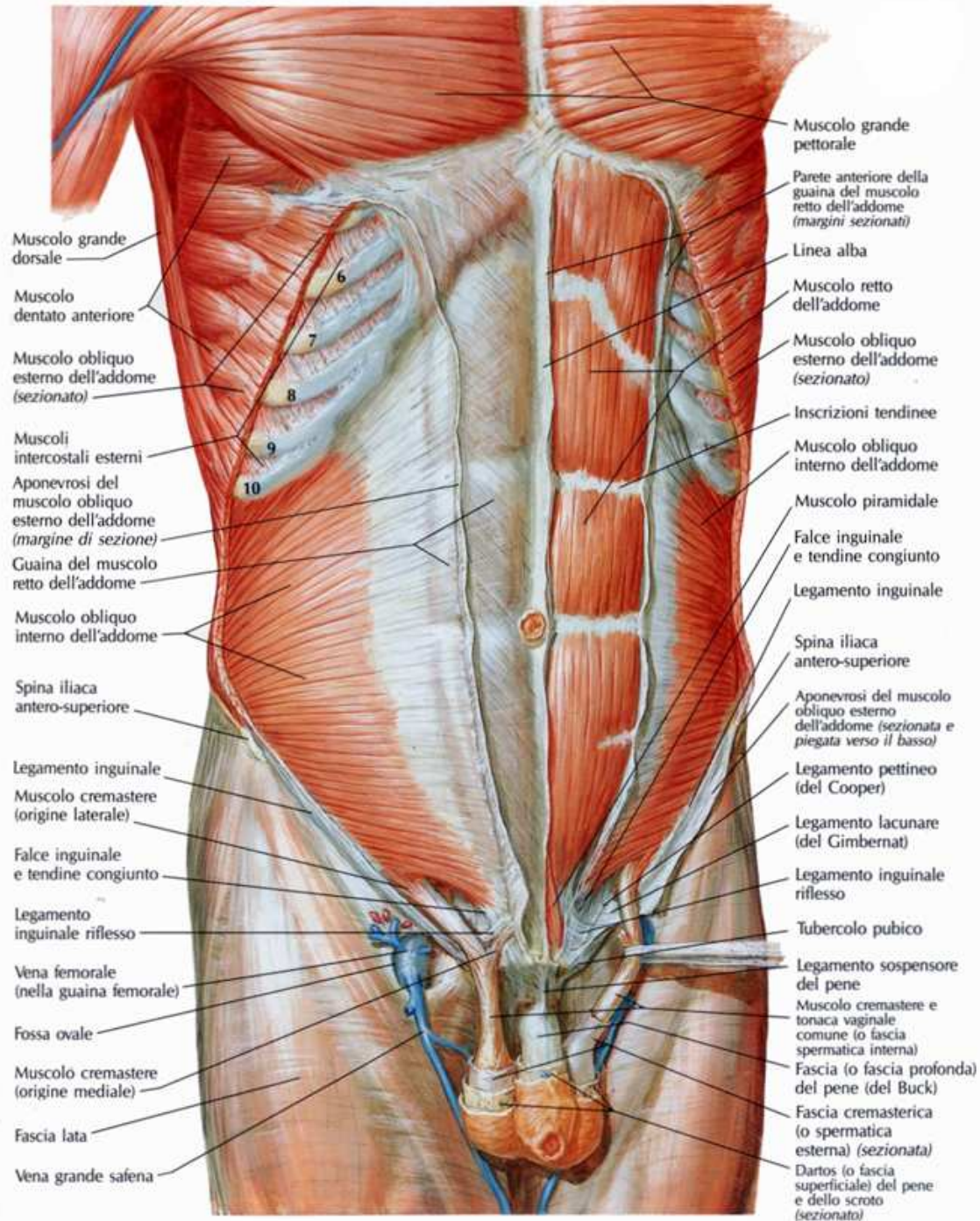


# I MUSCOLI DEL DORSO

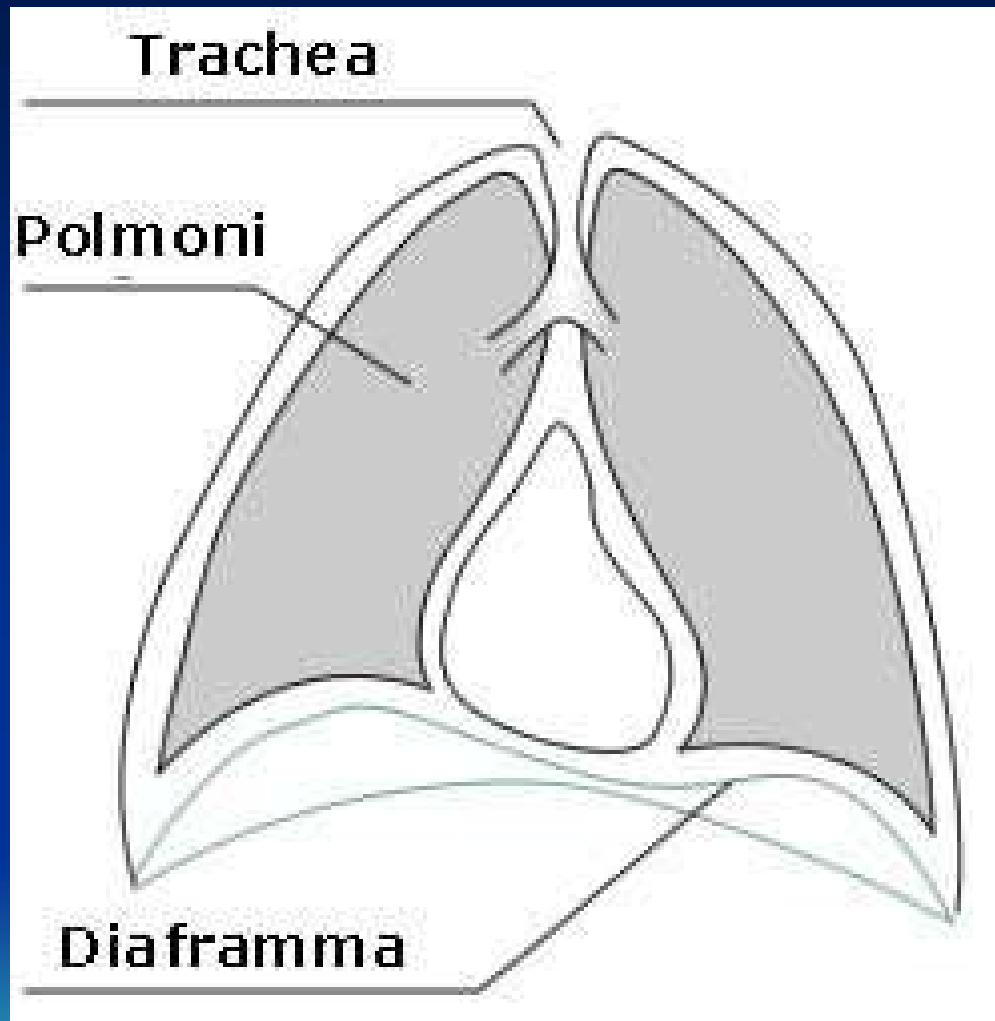
## Muscoli del dorso - strato superficiale



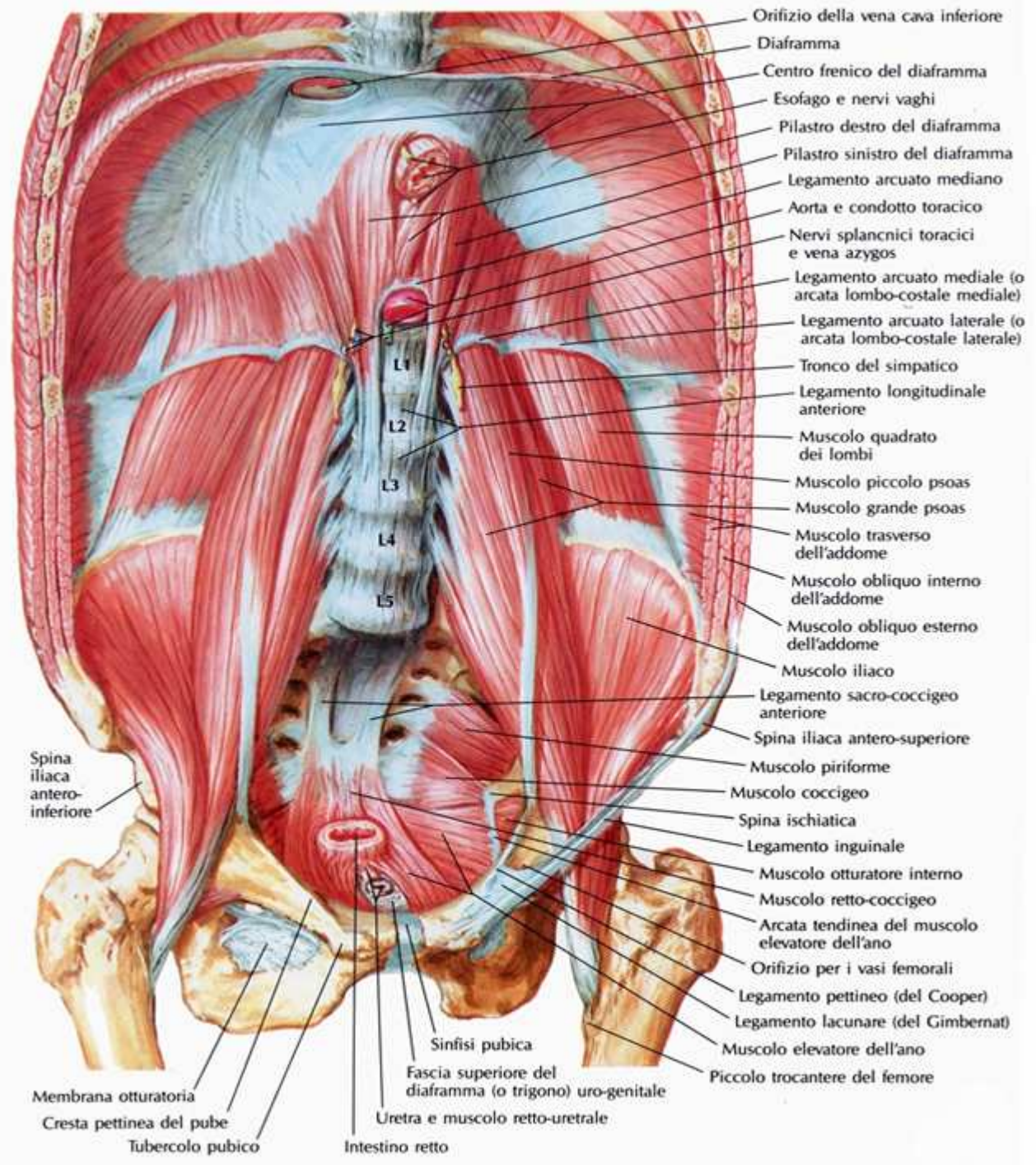
# I MUSCOLI DELL'ADDOME



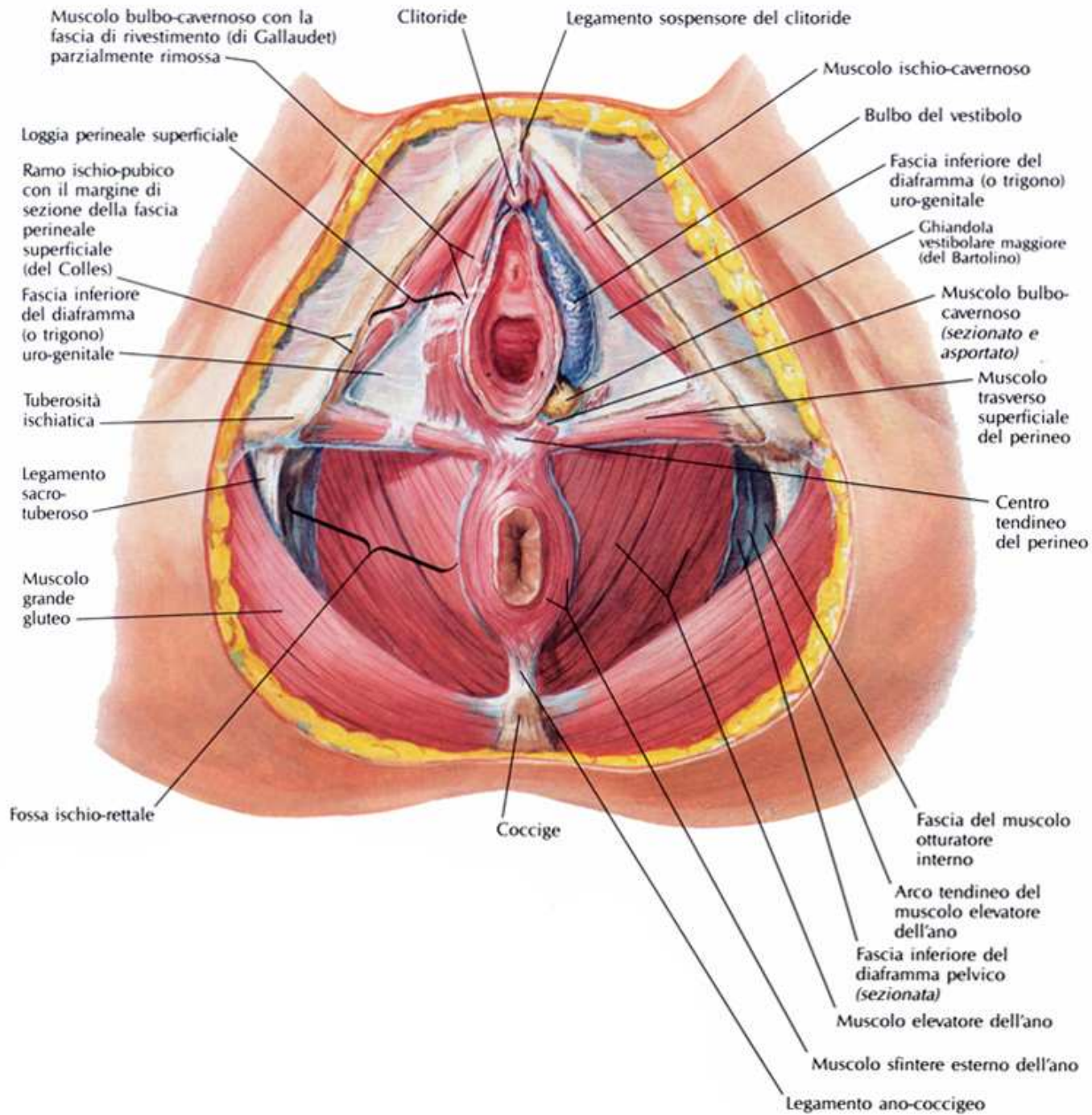
# I MUSCOLI DEL DIAFRAMMA



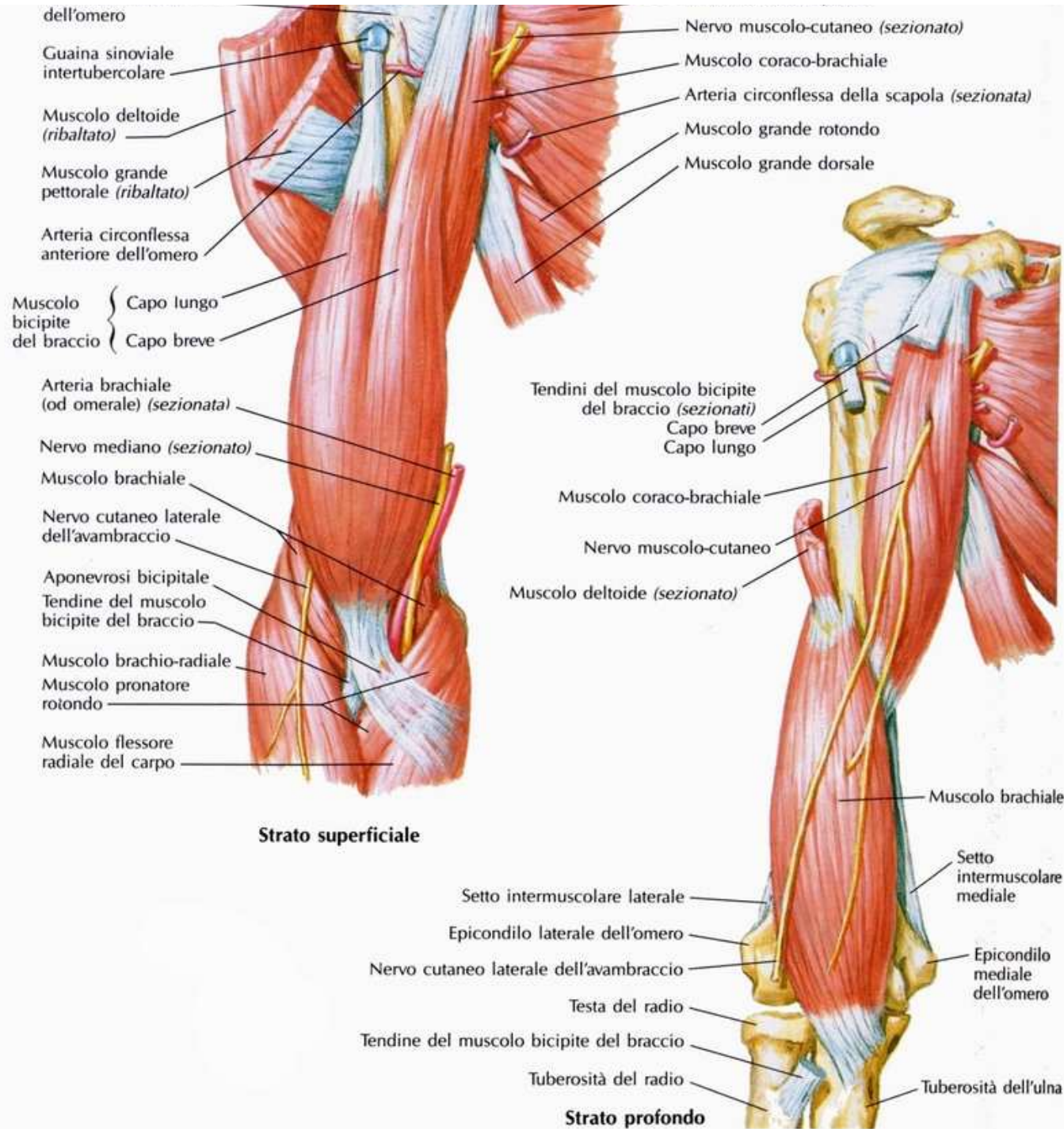
# I MUSCOLI DEL DIAFRAMMA



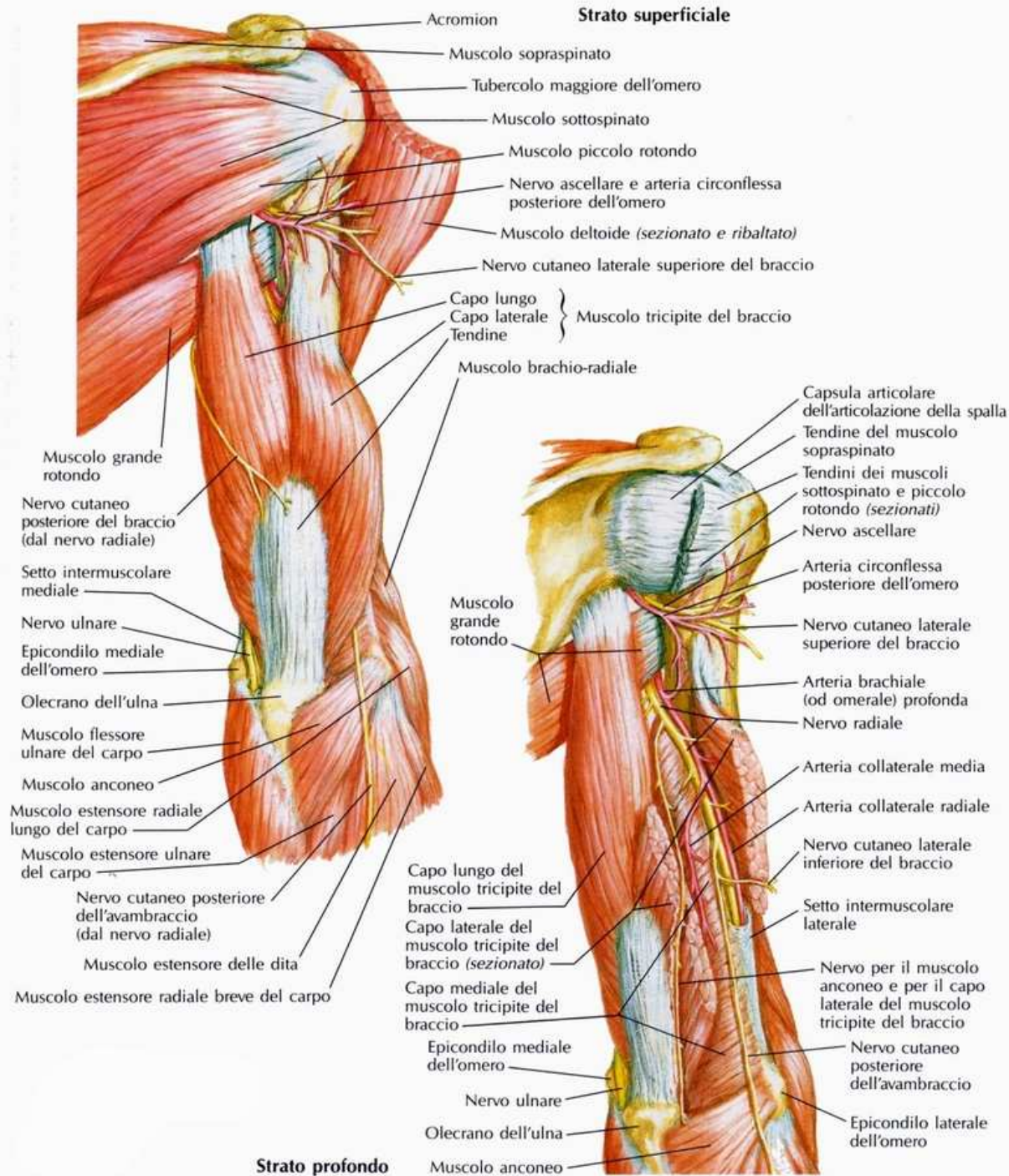
# I MUSCOLI DELLA PELVI



# I MUSCOLI DEGLI ARTI SUPERIORI

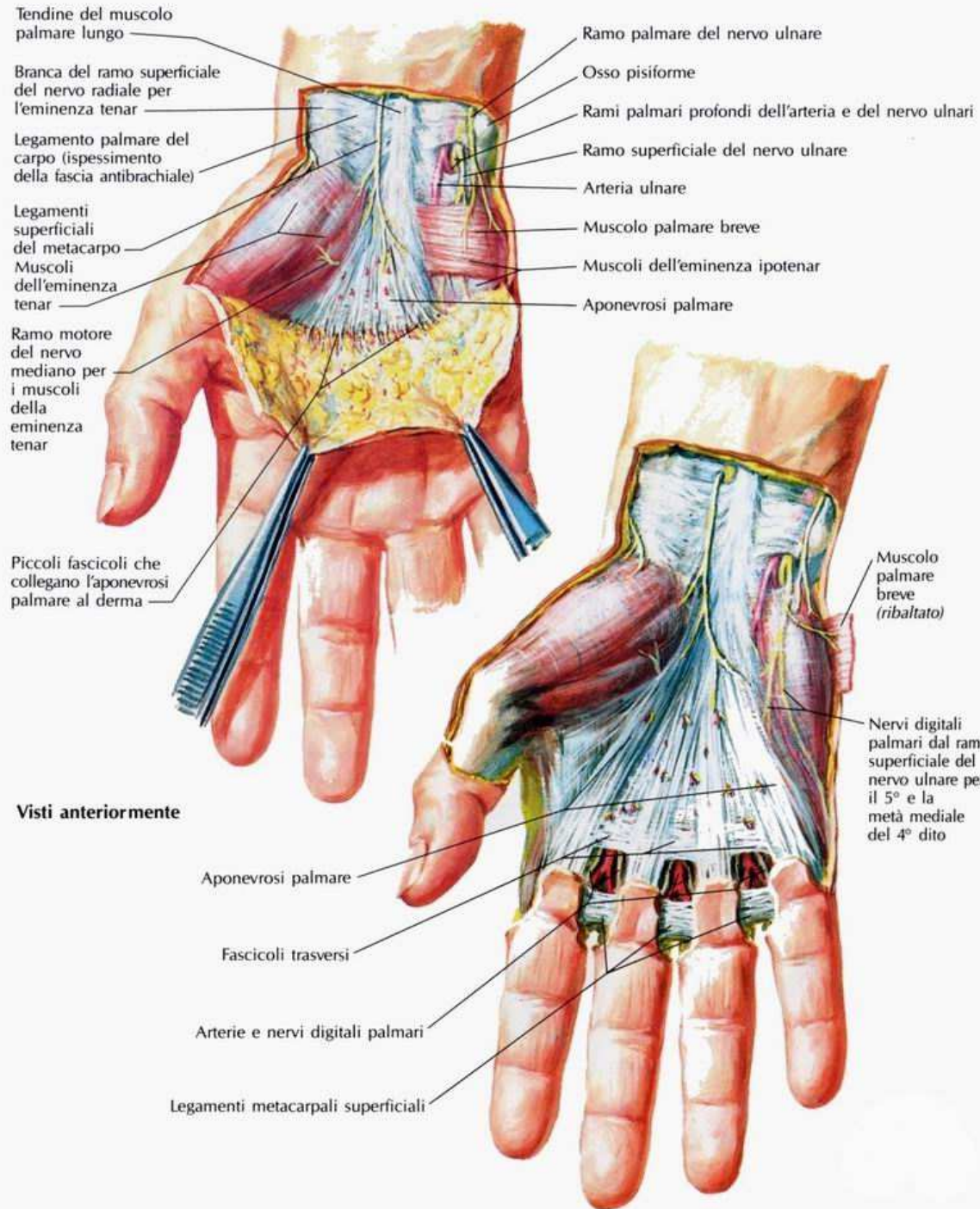


# I MUSCOLI DEGLI ARTI SUPERIORI

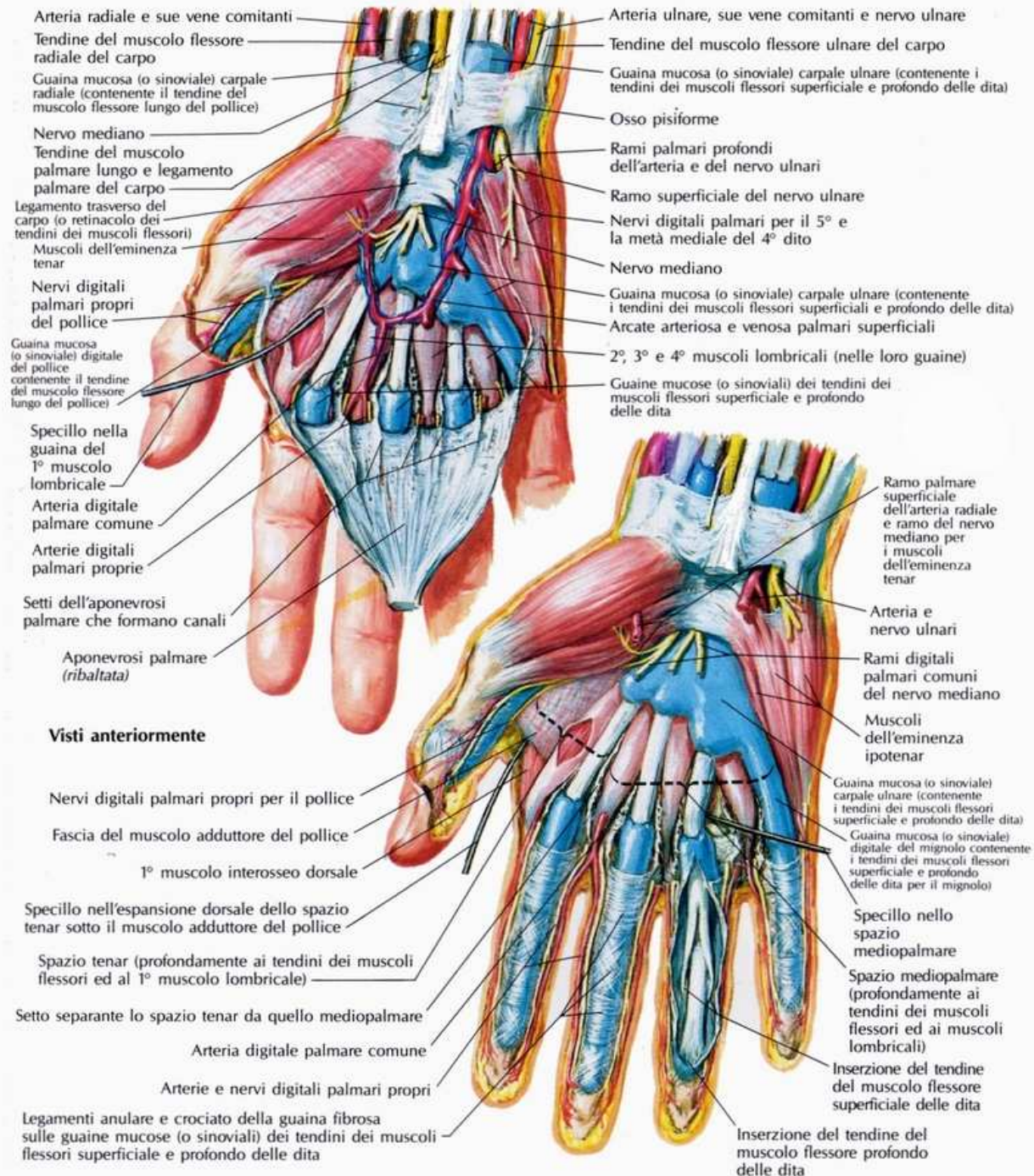




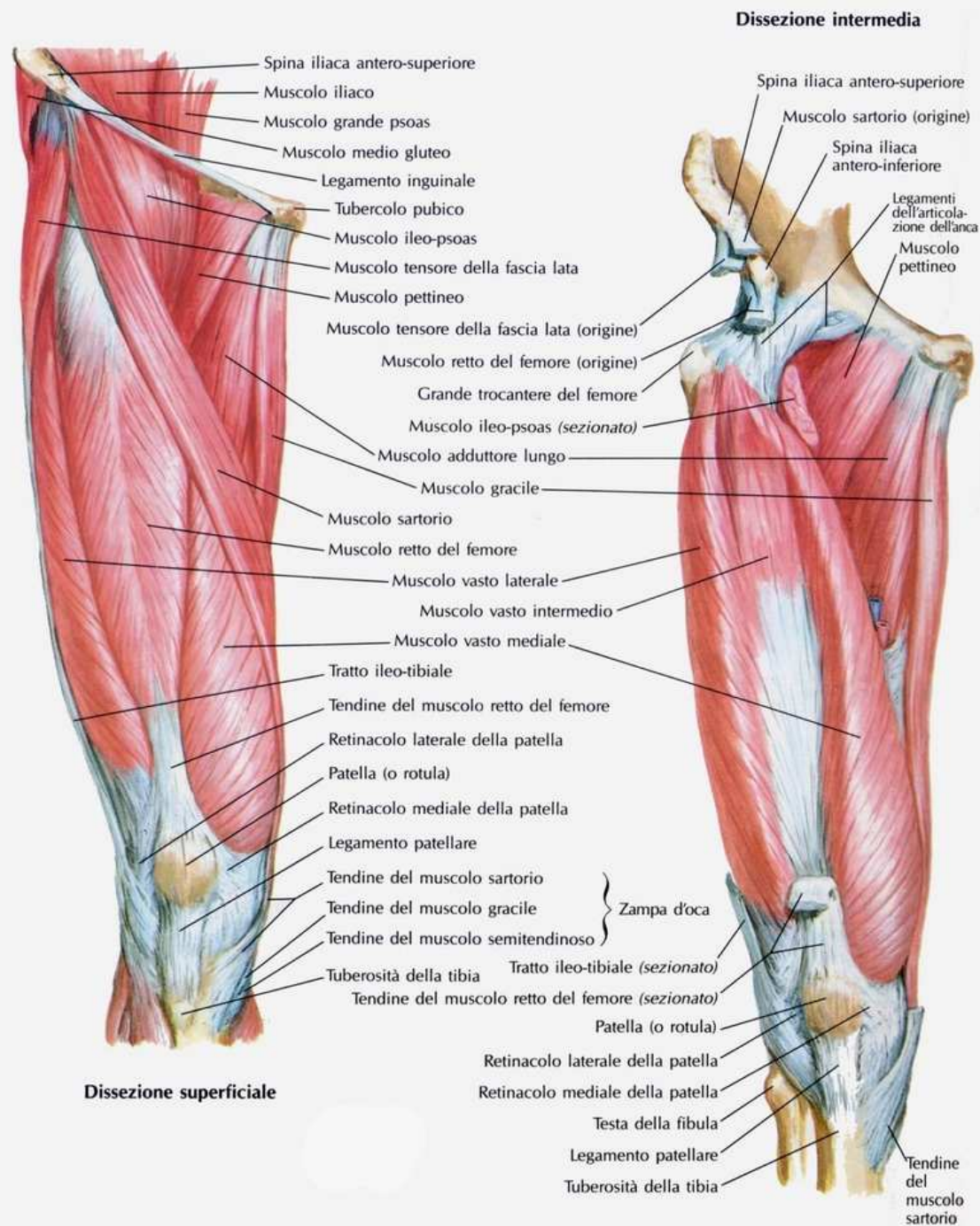
# I MUSCOLI DELLA MANO



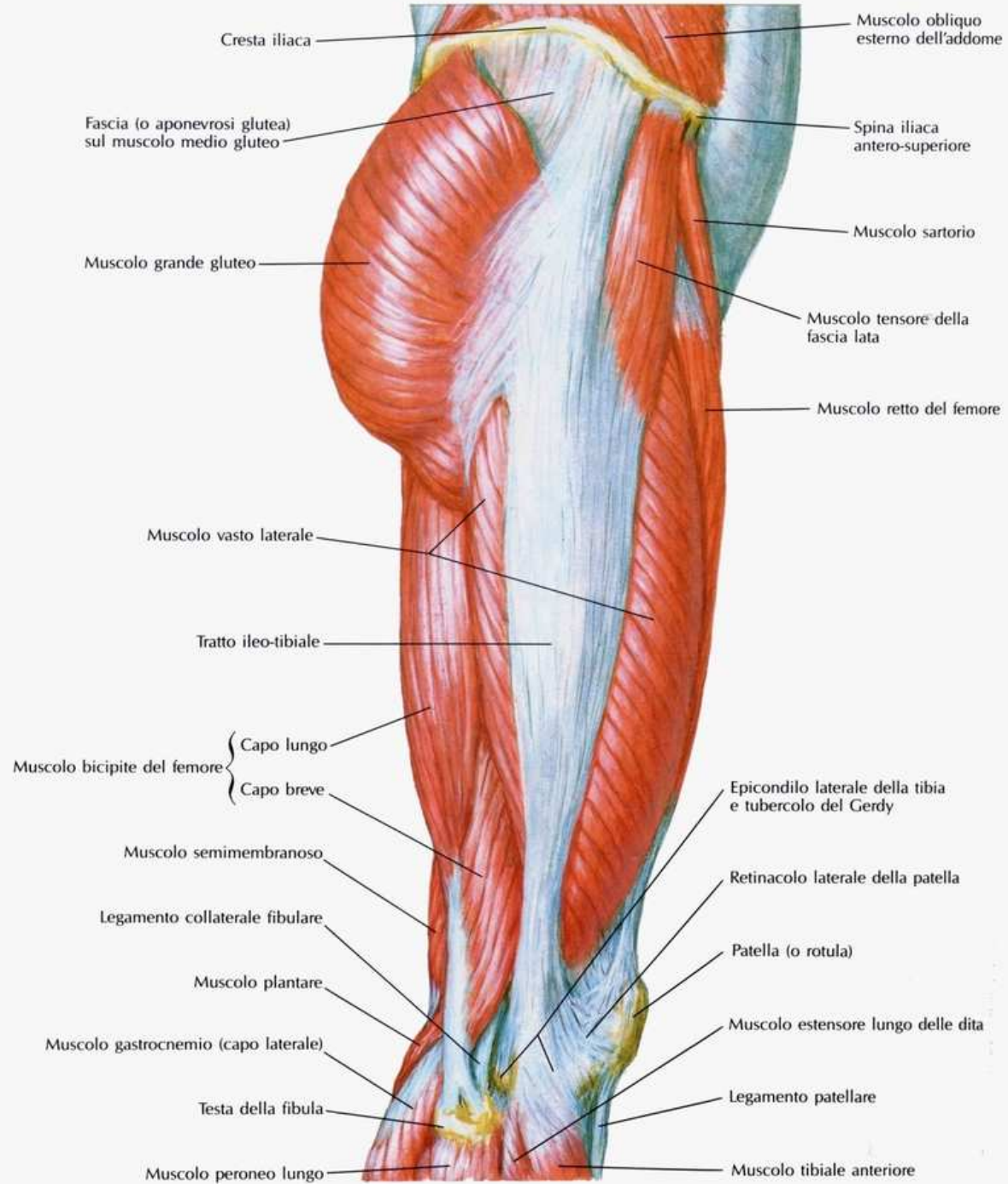
# I MUSCOLI DELLA MANO



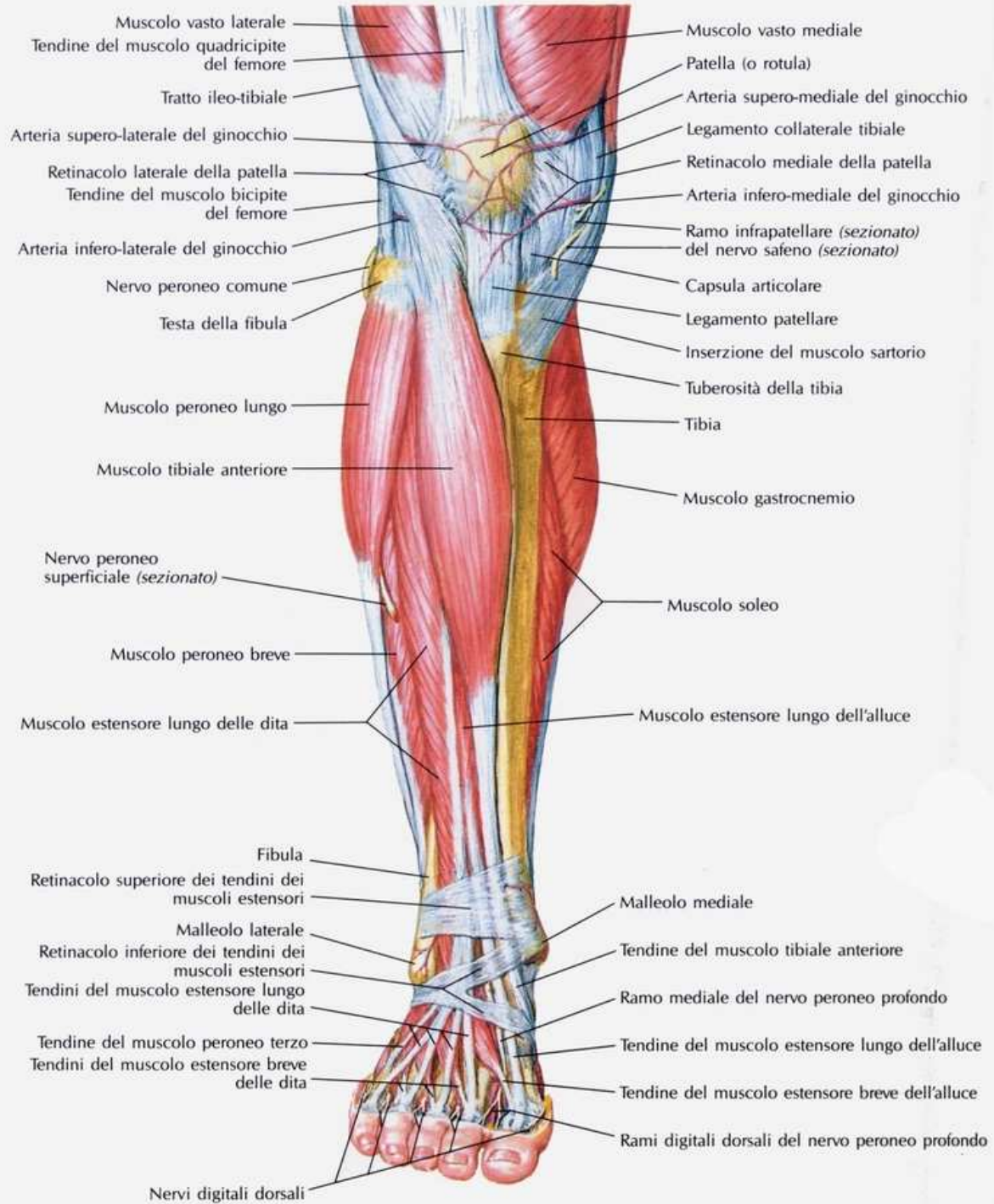
# I MUSCOLI DELLA COSCIA



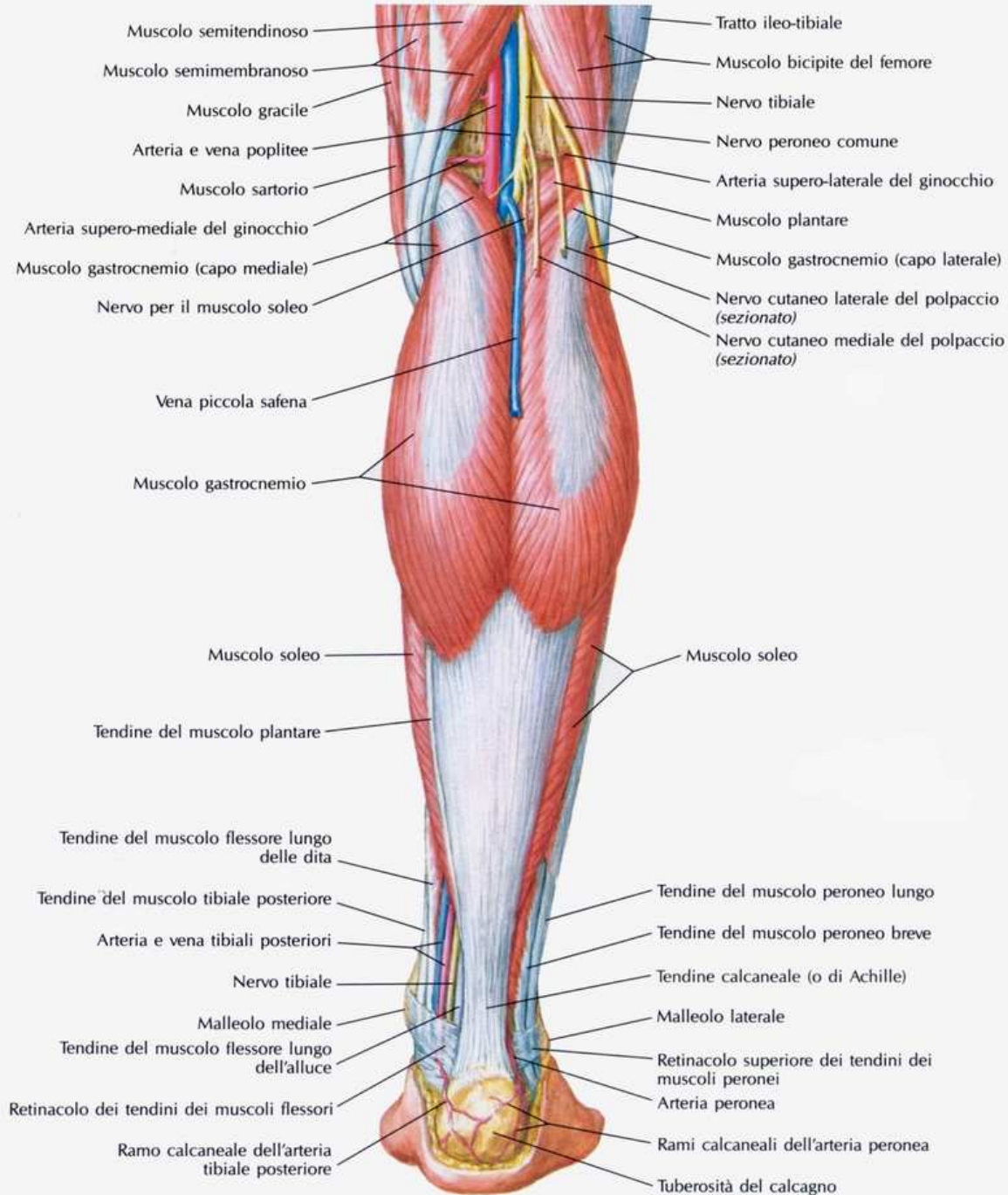
# I MUSCOLI DELLA COSCIA



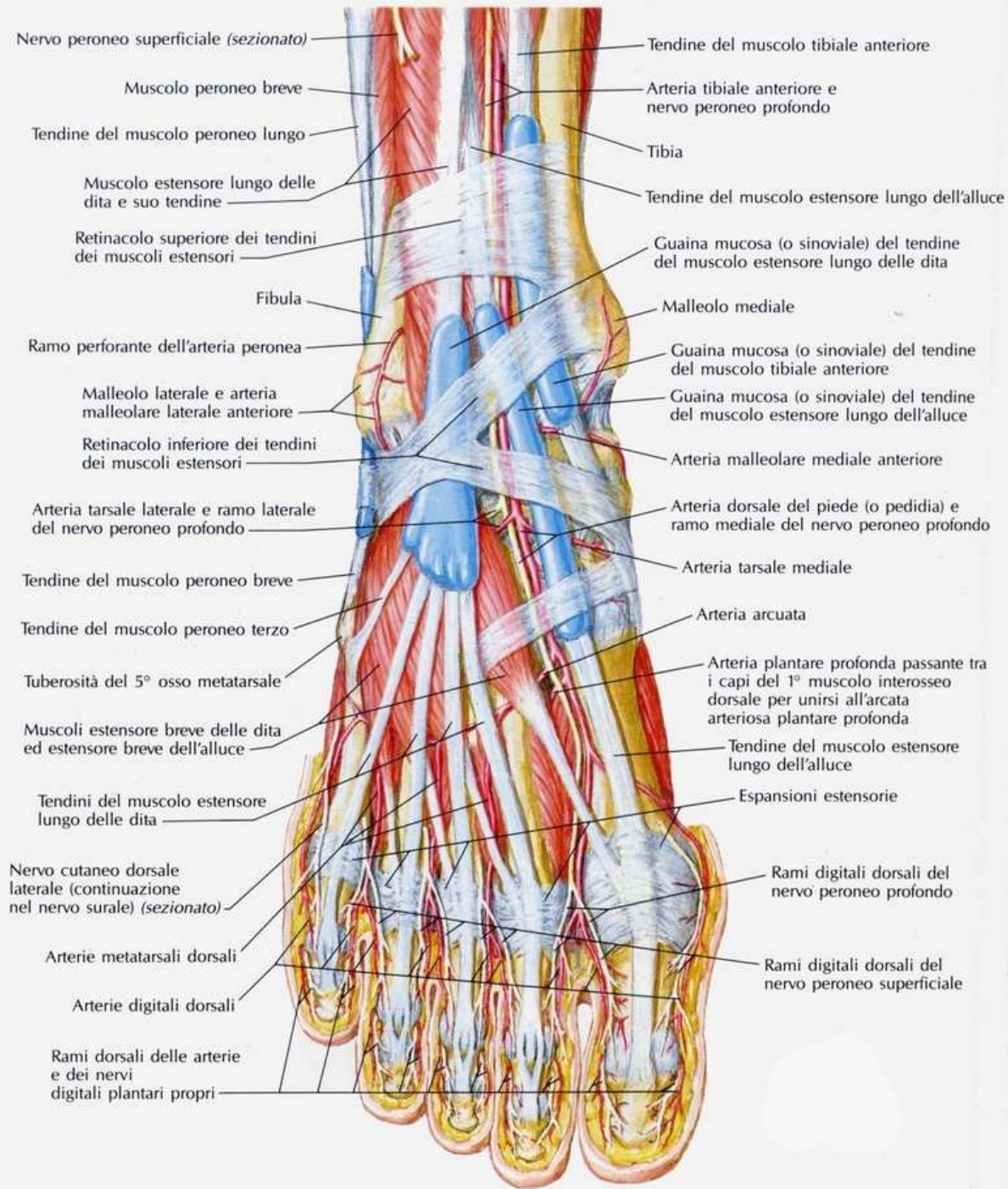
# I MUSCOLI DELLA GAMBA



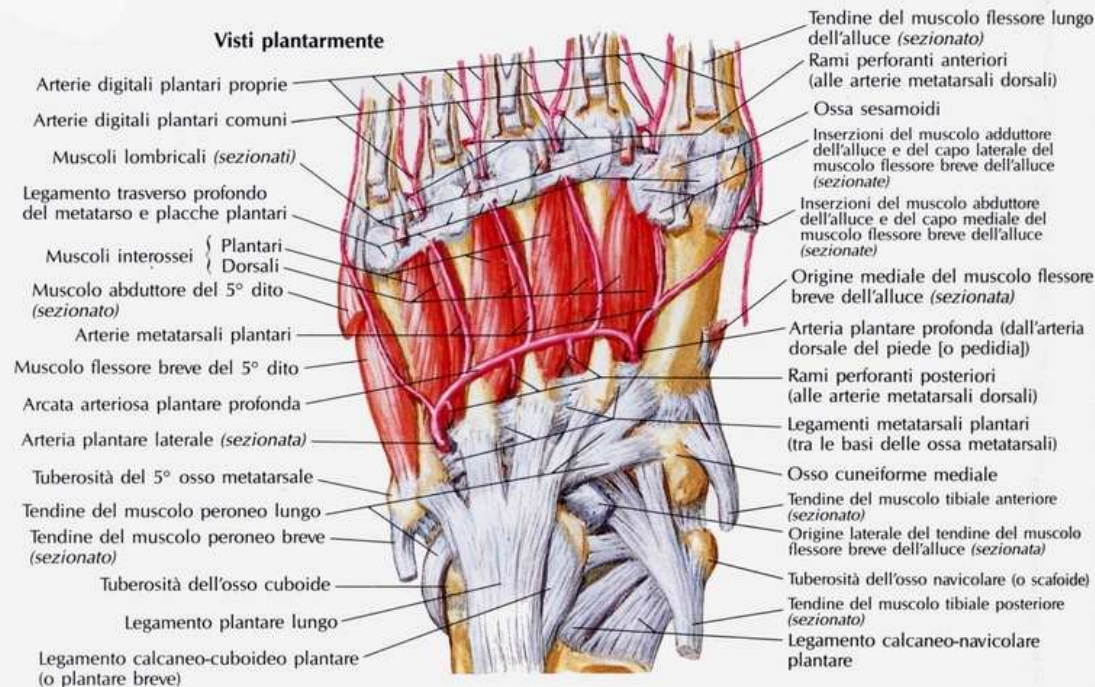
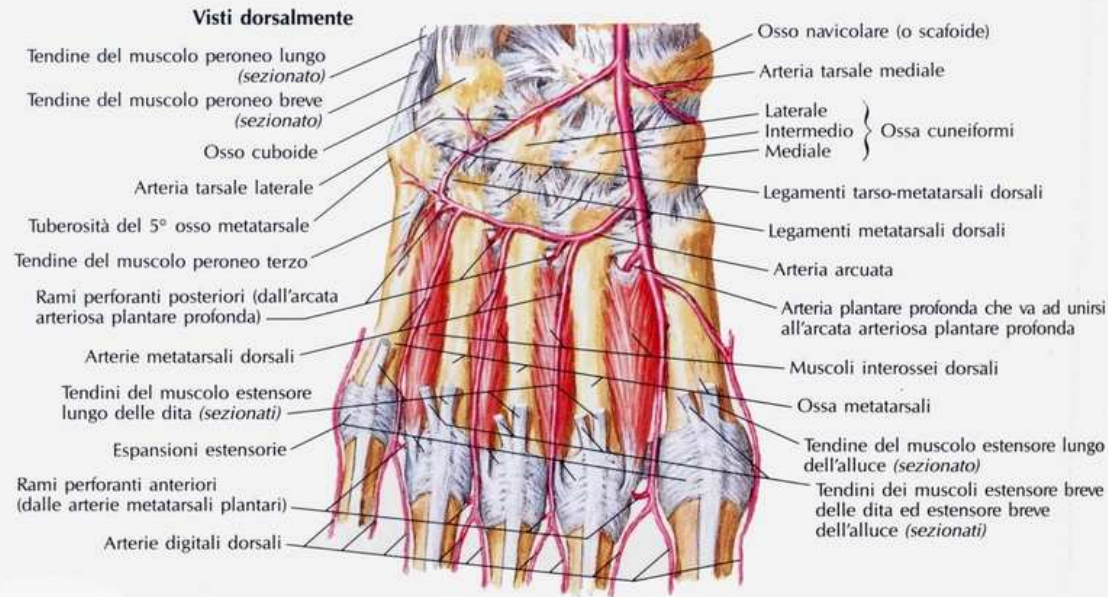
# I MUSCOLI DELLA GAMBA



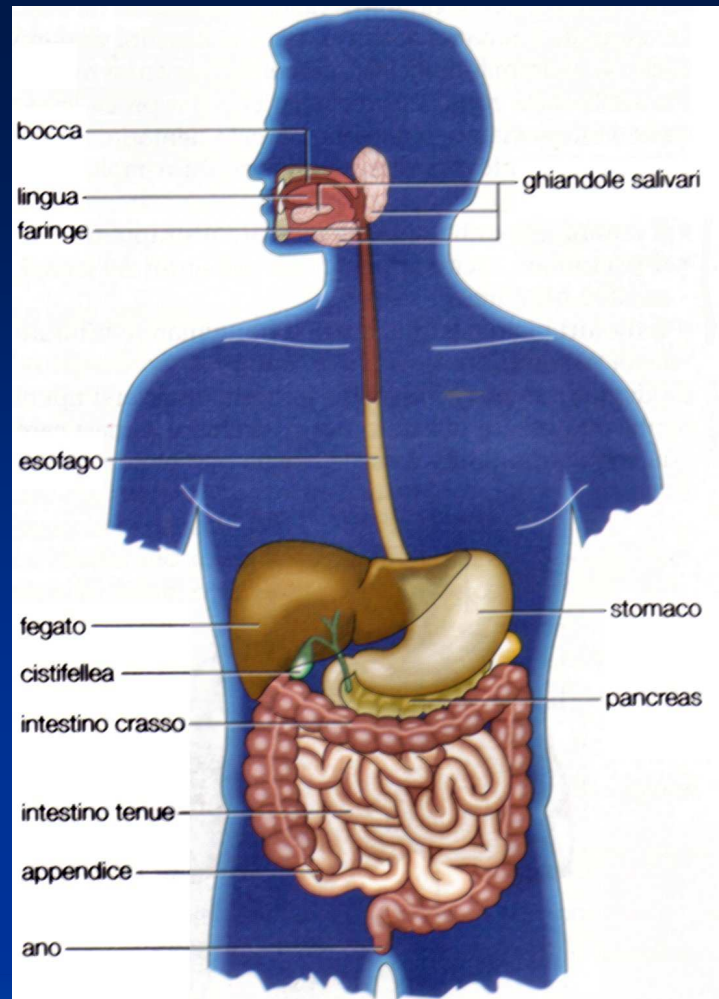
# I MUSCOLI DEL PIEDE



# I MUSCOLI DEL PIEDE







**PROSSIMA LEZIONE: L'APPARATO DIGERENTE**